

New Guidance Documents

Wear a mask.
Stay in school.

Applies to the classroom setting only:

https://www.coronavirus.in.gov/files/21_WearAMaskStayInSchool_9-7.pdf

Wear a mask. Stay in school.

COVID-19 School Scenarios

The option to not quarantine does not apply outside the classroom setting, including lunch, band, choir or extra-curricular activities.

MASK REQUIREMENT

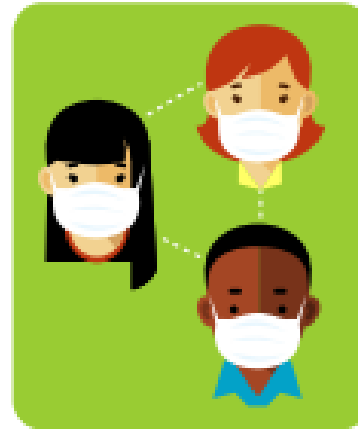
When a masked person tests positive and close contacts are wearing masks

COVID +

Close Contacts



ISOLATE



NO QUARANTINE
EVERYONE WITHIN 3 FEET
SELF-MONITOR

NO MASK REQUIREMENT

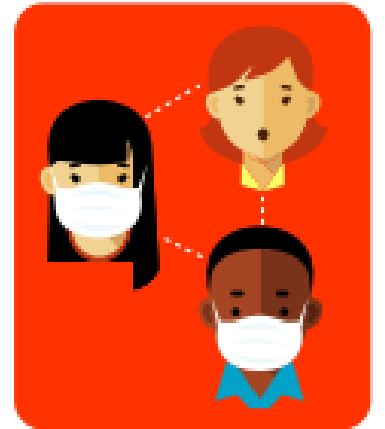
When positive person and/or close contacts are not wearing masks

COVID +

Close Contacts



ISOLATE



QUARANTINE
(ALL WITHIN 6 FT. UNLESS FULLY
VACCINATED AND ASYMPTOMATIC)