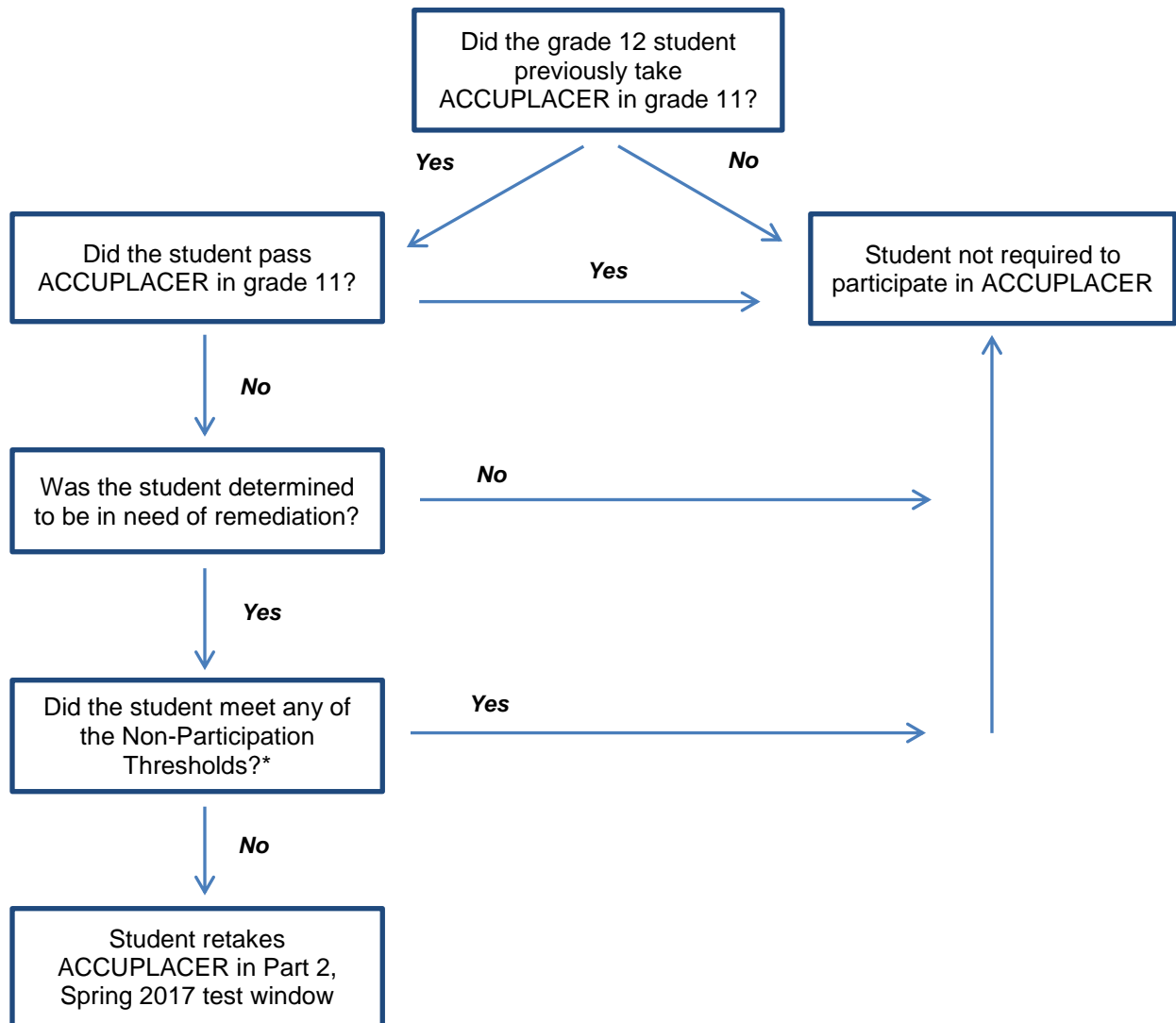


ACCUPLACER Participation Criteria and Implementation Guidance
Grade 12 Students
(Second-year Participants)
Part 2 Administration: 2016-17

For Seniors who participated in ACCUPLACER as a Grade 11 student



*ACCUPLACER Non-Participation Thresholds	
<u>ELA</u> <ul style="list-style-type: none"> • Old SAT Reading Score ≥ 460 • New SAT Reading Test Score ≥ 25 • ACT Reading Score ≥ 18 • ACT English Score ≥ 17 • ACCUPLACER Classic Version: Reading ≥ 76 • ACCUPLACER Custom Version: Reading Diagnostic ≥ 69 	<u>Math</u> <ul style="list-style-type: none"> • Old SAT Math Score ≥ 460 • New SAT Math Section Score ≥ 500 • ACT Math Score ≥ 18 • ACCUPLACER Classic/Custom Version: Elementary Algebra ≥ 92